

McCULLOCH®

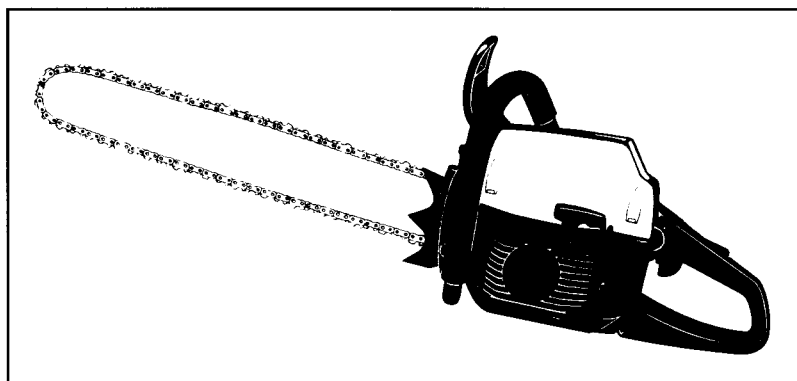
PARTNER

ILLUSTRATED PARTS LIST

PROMAC 54
PROMAC 61
PARTNER P610
PARTNER P541

SERIAL NUMBER PREFIX 01

CE



March 2000

C 1	240861	McCulloch	1	C 83	● 241473	1
C 2	241929	Partner	1	C 84	241357	1
B 2	● 240485		1	85	235642	1
B 3	● 240484		1	86	227259	1
4	● 227470		1	87	241147 M5x16	1
C 5	● 227468		1	88	236936	1
A 6	● 227471		1	89	236933 M6x18	1
C 7	● 227300		1	90	240845 M5x16	1
8	● 227467		1	91	241474	1
9	● 240884		1	92	227259	1
10	235530 M5x35		2	93	241308	1
11	235803 M5x25		2	B 94	● 227406	1
12	227626		4	A 95	● 227407	1
13	227762		1	96	● 227408	1
14	241312		1	97	● 227409	1
B 15	227508		1	C 98	● 227411	1
C 16	● 227420		1	99	● 227676	1
B 17	227507		1	100	● 227626	4
C 18	● 227459		1	101	● 235642	2
19	235806 M5x20		7	102	● 235530 M5x35	2
20	227626		7	C103	● 241468	1
21	241352		2	C104	● 241467	1
22	235806 M5x20		2	105	● 241469	1
23	227629		2	106	● 240863	1
24	235642		2	107	241572	1
25	227629		2	108	227626	2
26	227563 M5x16		1	109	235802 M5x14	2
27	235248		1	110	240863	1
28	229524		1	C111	241464	1
29	241356		1	C112	241465	1
30	227563 M5x16		1	113	241466	1
31	227259		1	114	241479	1
32	247202 yellow/gal or orange	1	1	115	235642	1
	241926 gold/oro or gold	1	1	116	227626	1
33	● 227458 M5x21		3	C117	240036	1
C 34	241501		1	118	235803 M5x25	1
35	● 241470		1	119	241487	1
36	235806 M5x20		2	120	241505	2
37	227626		2	121	241484	1
C 38	FIGURE 2			122	241485	1
A 39	240010		1	123	229510	3
40	227565 M5x25		4	C124	241319	1
C 41	227483		1	125	240314 M6x16	1
C 42	240654		1	126	227504	1
43	227491		1	127	235225	1
44	227567 M5x70		2	C128	241350	1
45	236381 M5x10		1	129	229514	1
46	227626		1	A130	227762	2
47	227566 M5x65		2	131	241317	1
48	227629		2	132	248166	1
49	227316		1	133	● 229450	2
50	235802 M5x14		2	134	● 227497	1
51	227458 M5x21		2	135	● 236728	1
B 52	227561		1	C136	● 227499	1
C 53	FIGURE 3			137	248167	1
54	227424		1	138	● 229450	1
A 55	227417		1	C139	● 241307	1
56	227629		2	C140	● 227370	2
57	235803 M5x25		2	141	241339	1
C 58	240114		1	C142	241344	1
C 59	227395		1	143	241345	1
C 60	227371		1	144	241346	1
61	227616 M5x16		2	C145	241347	1
62	235642		2	146	● 227359	3
63	227626		2	B147	● 227360	3
C 64	227368		1	148	● 241348	1
C 65	227369		1	C149	227546	1
C 66	227391		1	C150	227329	1
C 67	227631		1	B151	227547	1
68	241300		1	152	229519	1
C 69	227335		1	153	241349	1
A 70	227516		1	154	241343	1
B 71	227366		1	155	228908 M4x14	2
B 72	227365		1	C156	241320	1
C 73	241354		1	C157	● 241332	1
74	● 227443		1	C158	227383	1
75	● 227445		1	C159	241342	1
76	● 227801 M4x75		1	160	228908 M4x14	3
77	● 227904		1	C161	241340	1
78	● 240683		1	C162	227464	1
79	● 229524		1	C163	● 227527	1
80	● 240119		1	C164	241341	1
81	● 240862		3	165	240309	1
82	● 241471		1	166	240363	1
				167	227943	1

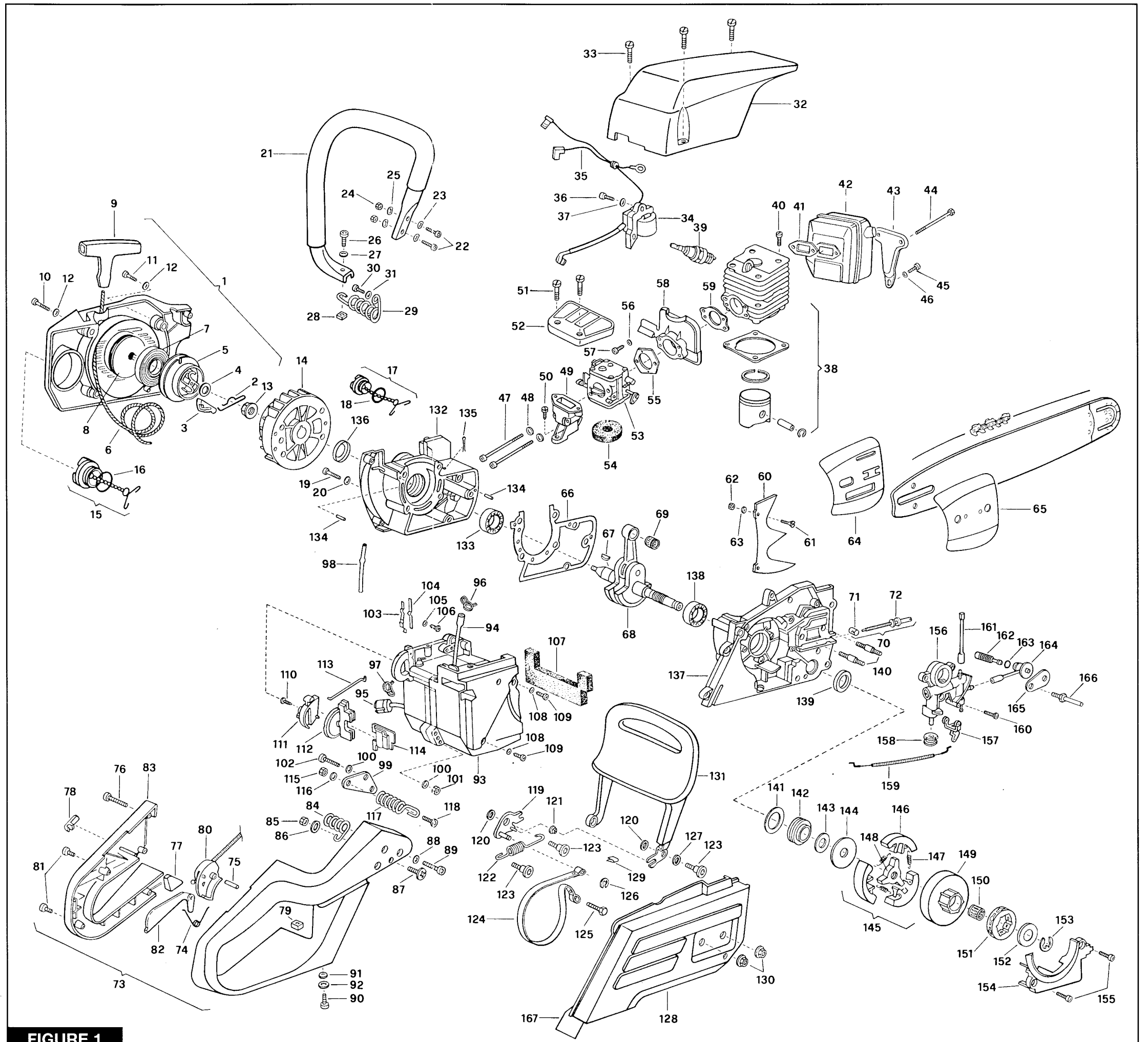


FIGURE 1

A = high moving - alta rotazione - haute demande - große Nachfrage
 B = medium moving - media rotazione - moyenne demande - mittelmäßige Nachfrage
 C = slow moving - bassa rotazione - basse demande - wenige Nachfrage

	54 cc	<table border="0"> <tr><td>C 1</td><td>227514</td><td>1</td></tr> <tr><td>B 2</td><td>● 227393</td><td>1</td></tr> <tr><td>C 3</td><td>● 227510</td><td>1</td></tr> <tr><td>4</td><td>●● 229544</td><td>2</td></tr> <tr><td>B 5</td><td>●● 227543</td><td>1</td></tr> <tr><td>6</td><td>●● 227344</td><td>1</td></tr> </table>	C 1	227514	1	B 2	● 227393	1	C 3	● 227510	1	4	●● 229544	2	B 5	●● 227543	1	6	●● 227344	1
	C 1	227514	1																	
B 2	● 227393	1																		
C 3	● 227510	1																		
4	●● 229544	2																		
B 5	●● 227543	1																		
6	●● 227344	1																		
59 cc	<table border="0"> <tr><td>C 1</td><td>227515</td><td>1</td></tr> <tr><td>B 2</td><td>● 227393</td><td>1</td></tr> <tr><td>C 3</td><td>● 227511</td><td>1</td></tr> <tr><td>4</td><td>●● 229544</td><td>2</td></tr> <tr><td>B 5</td><td>●● 227544</td><td>1</td></tr> <tr><td>6</td><td>●● 227344</td><td>1</td></tr> </table>	C 1	227515	1	B 2	● 227393	1	C 3	● 227511	1	4	●● 229544	2	B 5	●● 227544	1	6	●● 227344	1	
C 1	227515	1																		
B 2	● 227393	1																		
C 3	● 227511	1																		
4	●● 229544	2																		
B 5	●● 227544	1																		
6	●● 227344	1																		

FIGURE 2

VALBRO WJ 82		
C -	241311	carbur.
B 1	● 229925	1
A 2	●● 237211	1
3	● 229927	2
5	● 237202 L	1
6	● 229930 H	1
C 7	● 237203	1
9	● 240219	1
10	● 240218	1

FIGURE 3

A = high moving - alta rotazione - haute demande - große Nachfrage
 B = medium moving - media rotazione - moyenne demande - mittelmäßige Nachfrage
 C = slow moving - bassa rotazione - basse demande - wenige Nachfrage